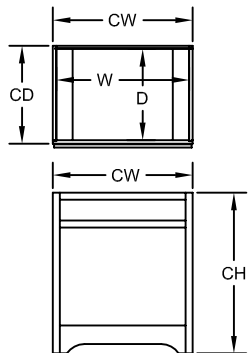
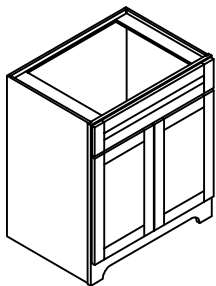


# Manor Collection Cabinetry

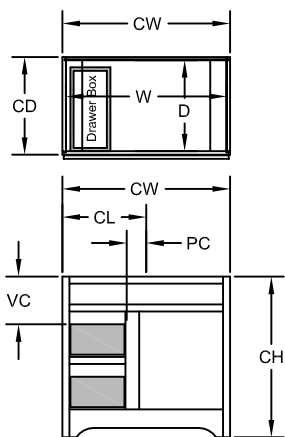
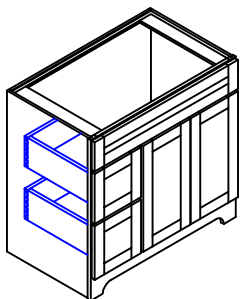
## CABINET SPECIFICATIONS



CD = CABINET DEPTH  
 CW = CABINET WIDTH  
 CH = CABINET HEIGHT

D = MAXIMUM SINK DEPTH  
 W = MAXIMUM SINK WIDTH

CD	D	CW	W
18	16-9/16	18	16-1/2
21	19-9/16	21	19-1/2
24	22-1/2	24	22-1/2
30	28-1/2	30	28-1/2

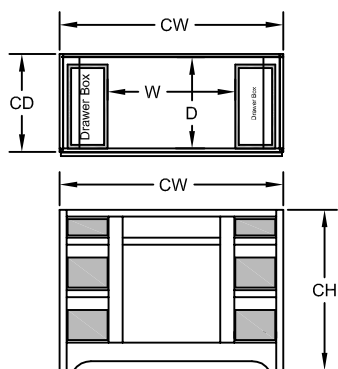
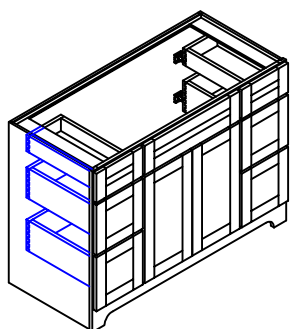


CD	D
18	16-9/16
21	19-9/16

CW	W	CL	PC
24	22-1/2	12	1-1/2
30	28-1/2	15	
36	34-1/2	18	7-1/2
42	40-1/2	21	

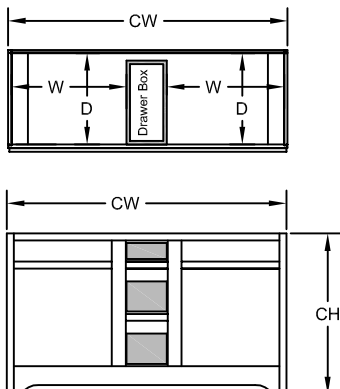
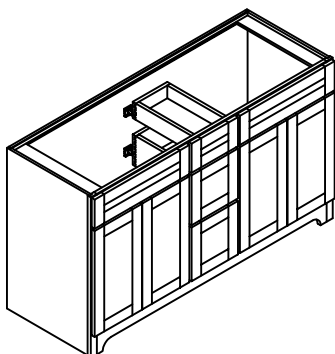
CH	VC
32	9
34-1/2	10-1/4

VC = VERTICAL CLEARANCE  
 CL = CENTERLINE  
 PC = PIPE CLEARANCE



CD	D	CW	W
18	16-9/16	48	27
21	19-9/16	54	

CH	32", 34-1/2"
----	--------------



CD	D	CW	W
18	16-9/16	60	24-3/4
21	19-9/16	66	27-3/4
		72	

CH	32", 34-1/2"
----	--------------

### NOTES:

- FRONT FRAME DRAWINGS SHOWN WITHOUT DRAWER FRONTS
- FURNITURE VANITIES WITH FOUR DRAWER STACKS ARE 34-1/2" ONLY