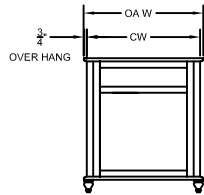
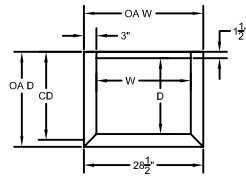
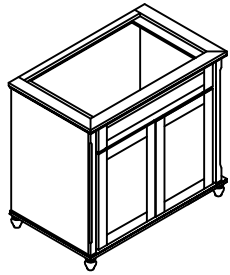


Charleston Collection Cabinetry

NOTE: THE CHARLESTON COLLECTION OFFERS UNIQUE STYLING WITH ITS APPLIED MOLDING.

REQUIRES NON-STANDARD WIDTHS AND DEPTHS FOR COUNTERTOP SIZING

CABINET SPECIFICATIONS

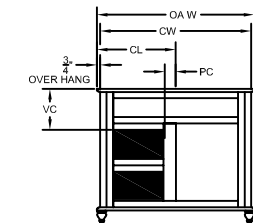
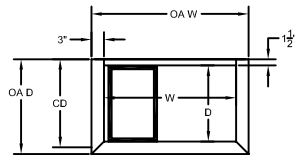
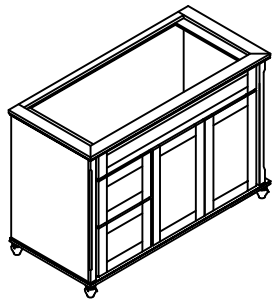


CD = CABINET DEPTH
 CW = CABINET WIDTH
 CH = CABINET HEIGHT
 OA D = OVERALL DEPTH
 OA W = OVERALL WIDTH
 D = MAXIMUM SINK DEPTH
 W = MAXIMUM SINK WIDTH

CD	OA D	D
18	** 19-5/8	15-1/8
21	** 22-5/8	18-1/8

CH	32", 34-1/2"
----	--------------

CW	OA W	W
18	** 19-1/2	13-1/2
21	** 22-1/2	16-1/2
24	** 25-1/2	19-1/2
27	** 28-1/2	22-1/2
33	** 34-1/2	28-1/2

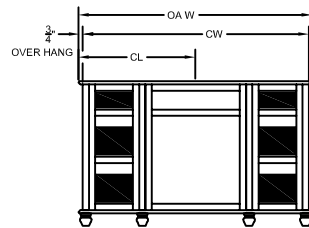
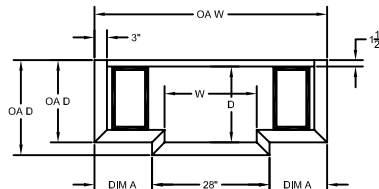
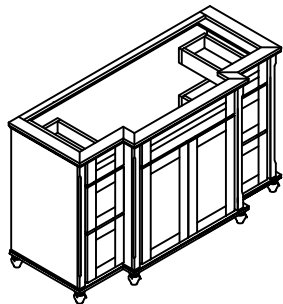


CD	OA D	D
18	** 19-5/8	15-1/8
21	** 22-5/8	18-1/8

CH	VC
32	9-3/4
34-1/2	11

CW	OA W	W	CL	PC
30	** 31-1/2	25-1/2	15-3/4	2-9/16
36	** 37-1/2	31-1/2	18-3/4	
42	** 43-1/2	37-1/2	21-3/4	
48	** 49-1/2	43-1/2	24-3/4	

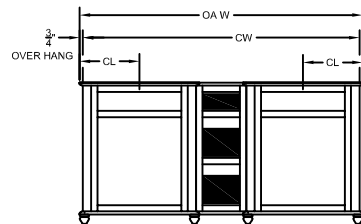
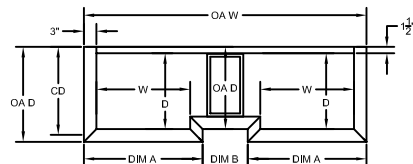
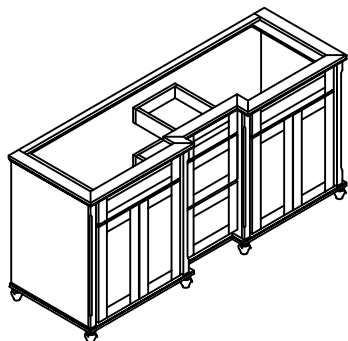
VC = VERTICAL CLEARANCE
 CL = CENTERLINE
 PC = PIPE CLEARANCE



CD	OA D	D
18	** 19-5/8 16-5/8	15-1/8
21	** 22-5/8 19-5/8	18-1/8

CW	OA W	W	CL	DIM A
54	** 55-1/2	22	27-3/4	13-3/4
60	** 61-1/2		30-3/4	16-3/4

CH	32", 34-1/2"
----	--------------



CD	OA D	D
18	** 19-5/8 16-5/8	15-1/8
21	** 22-5/8 19-5/8	18-1/8

CW	OA W	W	CL	DIM A	DIM B
66	** 67-1/2	22-3/8	14-3/16	28-3/8	10-3/4
72	** 73-1/2	23-7/8	14-15/16	29-7/8	13-3/4

CH	32", 34-1/2"
----	--------------

** NON-STANDARD SIZES