

**Allure® Side Handle Kitchen Faucet
Model LK6165 and LK6166****FEATURES****Model LK6165**

- One hole single lever top mount faucet
 - 1-1/2" (38mm) diameter faucet hole required
 - Maximum countertop thickness 1-1/2" (38mm)
- Solid brass construction
- 360° swing spout
- Removable ceramic disc cartridge
- Heavy plate finish
- 3/8" (10mm) O.D. flexible supply tubes with 1/2" (13mm) male I.P.S. adapters.
- Available in the following colors & finishes
 - Chrome LK6165CR, LK6166CR
 - Brushed nickel LK6165NK, LK6166NK
- Ship Wt. 7.5 lbs. (3.4Kg)
- Due to the weight of this faucet, Elkay recommends that it be installed to an 18" (457mm) gauge stainless steel sink (or heavier) or to a solid surface countertop
- Maximum flow rate
 - 2.5 GPM/9.5 L/min at 80 P.S.I.G
 - 2.2 GPM/8.3 L/min at 60 P.S.I.G

Model LK6166

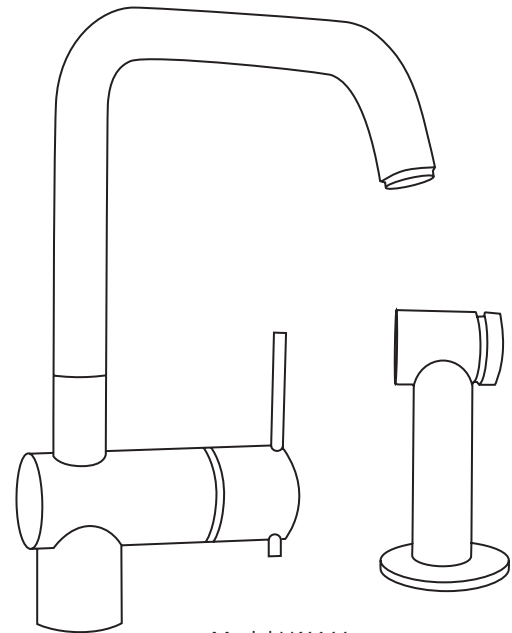
- Same as LK6165 except with retractable side spray and hose
- Two hole single lever top mount faucet
 - Two 1-1/2" (38mm) diameter faucet holes required
 - Maximum countertop thickness 1-1/2" (38mm)
- Ship Wt. 9.5 lbs. (4.3Kg)

WARRANTY

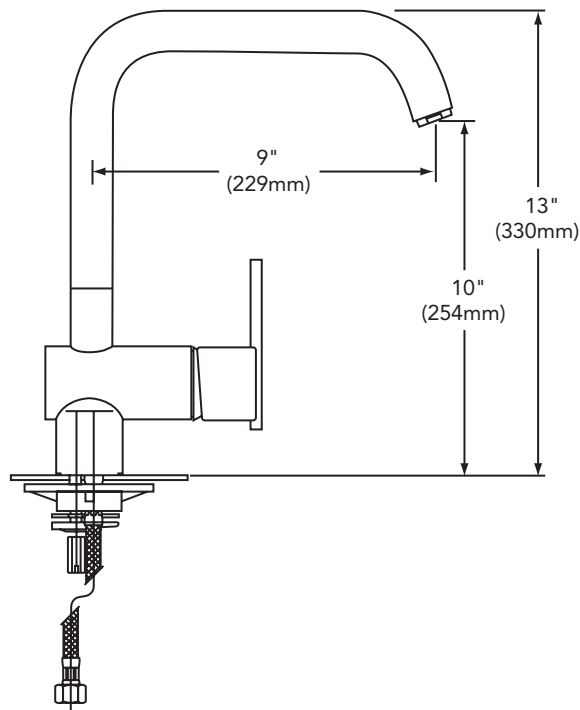
- Limited Lifetime

COMPLIES WITH:

- ANSI/NSF61-CERTIFIED
- ASME A112.18.1-05/CSA B125.1-2005
- CA AB1953/VT S152
- cUPC-CERTIFIED
- UPC-CERTIFIED

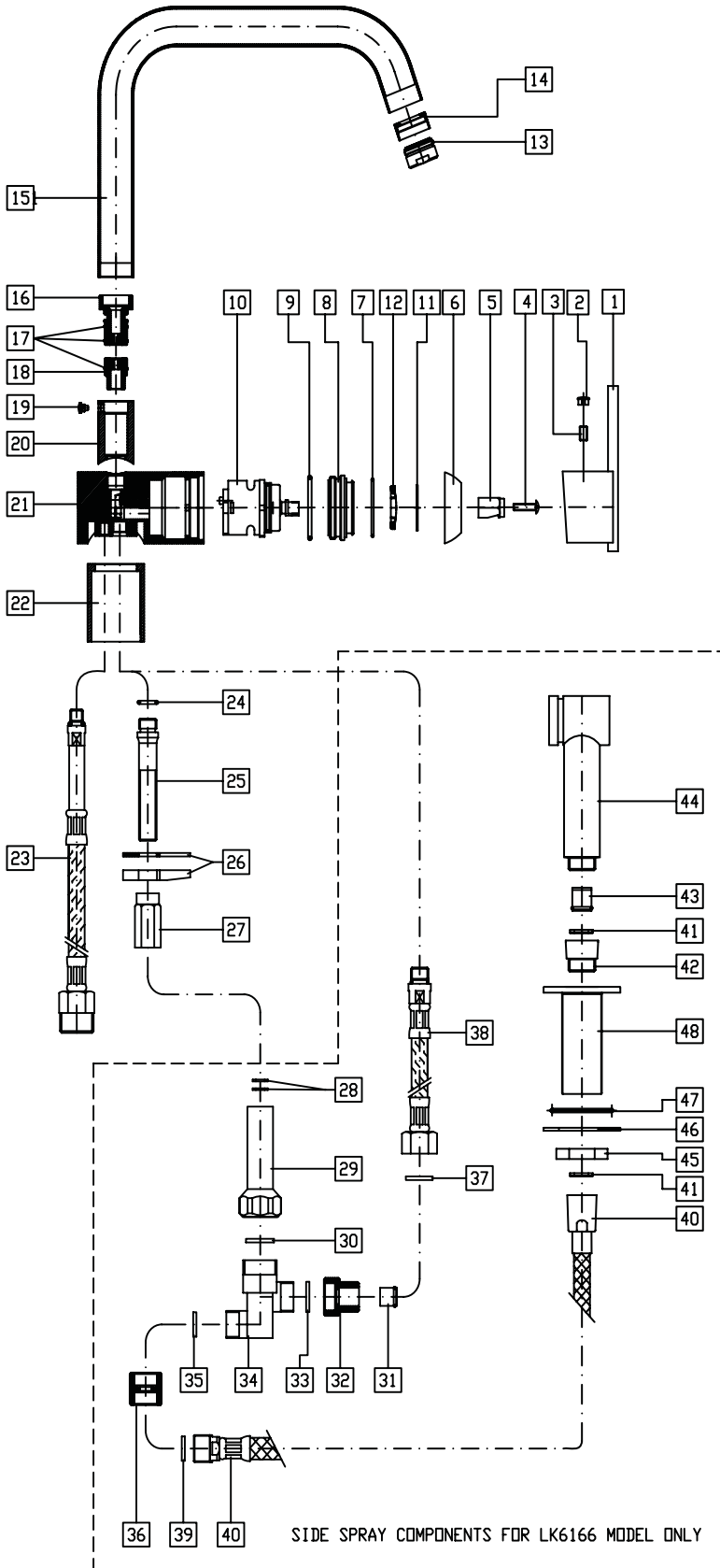


Model LK6166



SEE OTHER SIDE FOR REPLACEMENT PARTS

Allure® Side Handle Kitchen Faucet Model LK6165 and LK6166



ITEM	PART	DESCRIPTION
1		
2	A56058R - CHROME	LEVER HANDLE ASSEMBLY
3	A56063R - BRUSHED NICKEL	
4		
5		
6		
7	A56057R - CHROME	METAL WASHER/COVER
8	A56062R - BRUSHED NICKEL	
9		
10	A54236	CARTRIDGE
11	N/A	N/A
12		
13	A56060R - CHROME A56065R - BRUSHED NICKEL	AERATOR
13		
14		
15	A56091R - CHROME	SPOUT ASSEMBLY
16	A56092R - BRUSHED NICKEL	
17		
18		
19		
20		
21		
22		
23		
24		
25		
26		
27		
28		
29		
30		
31		
32		
33		
34		
35		
36		
37		
38		
39		
40		
41	A56156R - CHROME	SIDE SPRAY ASSEMBLY
42	A56157R - BRUSHED NICKEL	
43		
44		
45		
46		
47	N/A	N/A
48		