

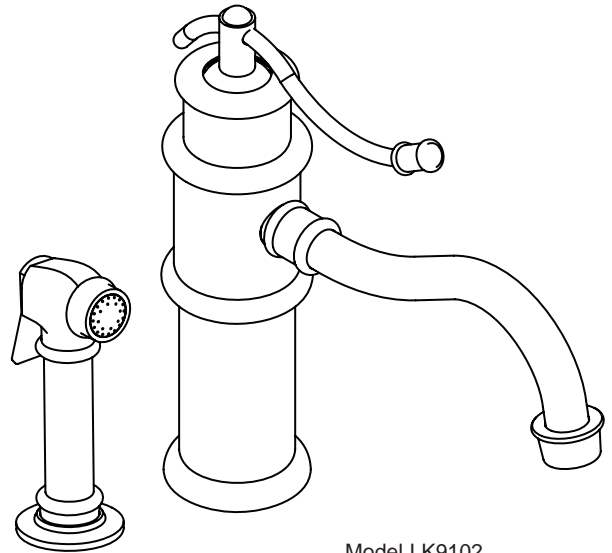
## Oldare™ Single Handle Kitchen Faucet Models LK9101 and LK9102

### FEATURES

#### Model LK9101

- Single hole top mount installation
  - 1-1/2" (38mm) faucet hole required
  - Maximum countertop thickness 2-1/2" (64mm)
- Single-lever faucet
- 360° swing spout
- Ceramic disc cartridge
- Solid brass construction
- Flexible supply tubes with 1/2" (13mm) male IPS adapters
- Available in the following finishes
 

- Antique brass	<b>LK9101AB</b>	<b>LK9102AB</b>
- Brushed nickel	<b>LK9101NK</b>	<b>LK9102NK</b>
- Chrome	<b>LK9101CR</b>	<b>LK9102CR</b>
- Old english brass	<b>LK9101OEB</b>	<b>LK9102OEB</b>
- Pewter	<b>LK9101PW</b>	<b>LK9102PW</b>
- Polished brass	<b>LK9101PB</b>	<b>LK9102PB</b>
- Polished nickel	<b>LK9101PN</b>	<b>LK9102PN</b>
- Antique bronze	<b>LK9101RB</b>	<b>LK9102RB</b>
- Ship Wt. 9 lbs. (4Kg)
- Due to the weight of this faucet, Elkay recommends that it be installed to an 18" (457mm) gauge stainless steel sink (or heavier) or to a solid surface countertop
- Maximum flow rate
  - 2.5 GPM/9.5 L/min at 80 P.S.I.G.
  - 2.2 GPM/8.3 L/min at 60 P.S.I.G.



Model LK9102

#### Model LK9102

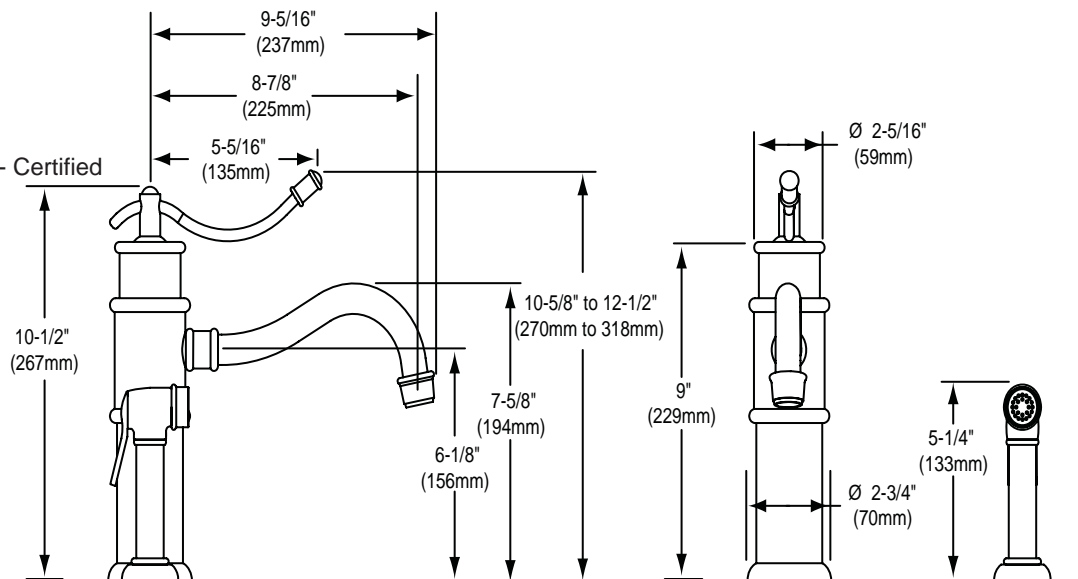
- Same as LK9101 except with a retractable spray head and hose
- Two hole top mount installation
  - Two 1-1/2" (38mm) faucet holes required
  - Maximum countertop thickness 1-5/8" (41mm)
- Ship weight is 10-1/2 lbs. (4.8Kg)

### WARRANTY

- Limited Lifetime

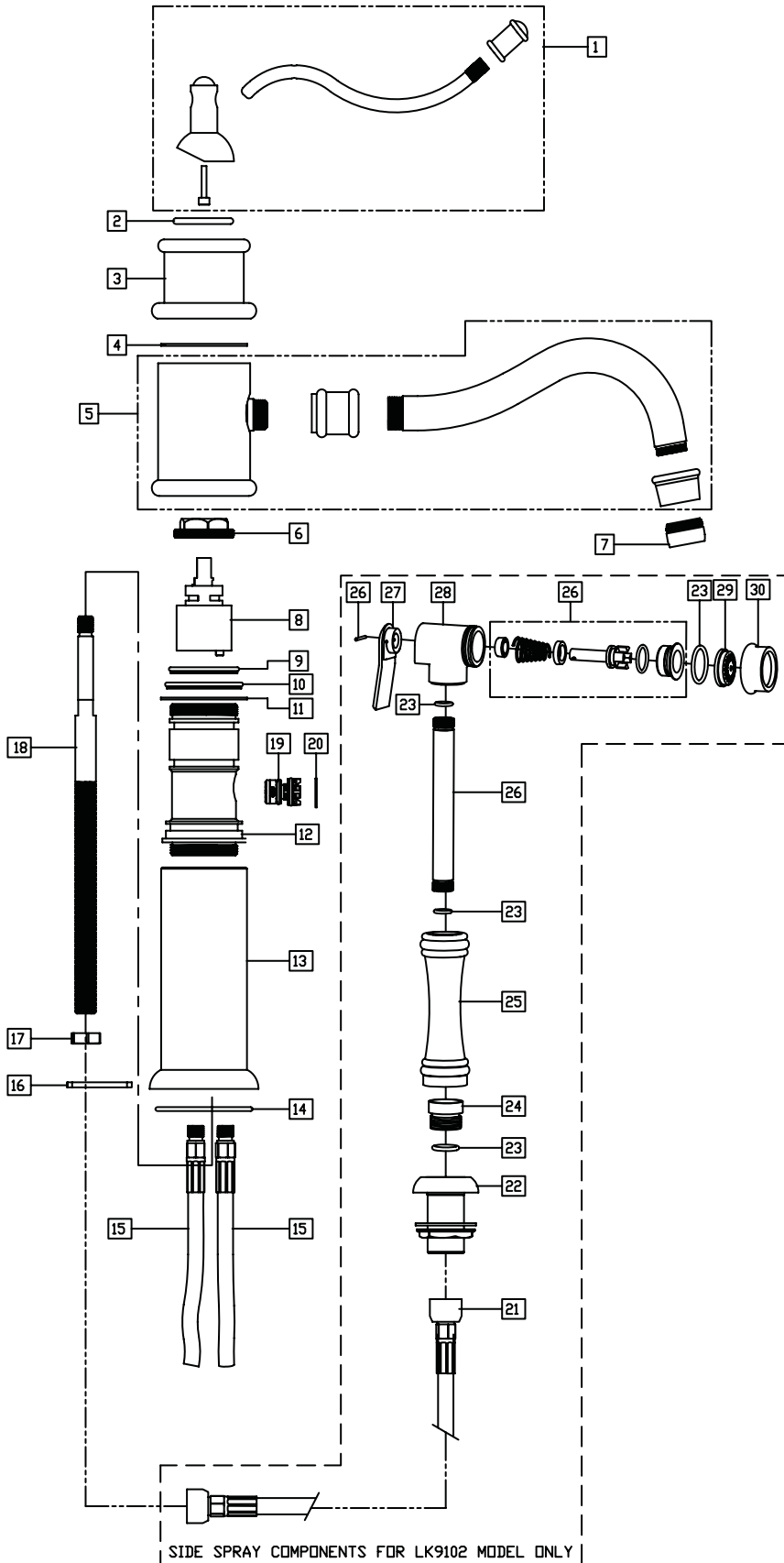
### COMPLIES WITH:

- ADA - LK9101 model only
- ANSI/NSF61
- ASME 112.18.1/CSA B125.1 - Certified
- CA AB1953/VT S152
- cUPC - Certified
- UPC - Certified



SEE OTHER SIDE FOR REPLACEMENT PARTS

## Oldare™ Single Handle Kitchen Faucet Models LK9101 and LK9102



FINISH CODE	FINISH CODE	DESCRIPTION
AB	_047	ANTIQUÉ BRASS
CR	_026	POLISHED CHROME
NK	_013	BRUSHED NICKEL
OEB	_OEB	OLD ENGLISH BRASS
PB	_003	POLISHED BRASS
PN	_014	POLISHED NICKEL
PW	_15A	PEWTER
RB	_11B	ANTIQUÉ BRONZE

\* - DESIGNATES A PART THAT WILL NEED THE FINISH CODE (FROM THE TOP CHART) ADDED TO THE END FOR ORDERING. I.E. LK755CR  
 \*\* - DESIGNATES A PART THAT WILL NEED THE FINISH CODE (FROM THE TOP CHART) ADDED TO THE END FOR ORDERING. I.E. M501L\_047

ITEM	IND. PART	KIT. PART	DESCRIPTION
1	N/A		HANDLE ASSEMBLY
2	P37041	LK755*	
3	P01100		
4	P35032	N/A	WASHER
5	N/A	LK766*	SPOUT ASSEMBLY
6	P29034	N/A	NUT
7	N/A	M501L**	AERATOR ASSEMBLY
8	P29033	LK760	CARTRIDGE ASSEMBLY
9	P37043	N/A	O-RING
10	P37040	N/A	O-RING
11	P35032	N/A	WASHER
12	P28037	N/A	BODY
13	N/A	LK765*	BASE ASSEMBLY
14	P37124	N/A	O-RING
15	P47001XX	N/A	SUPPLY HOSE
16	P35179	LK761	MOUNTING HARDWARE
17	P35248		
18	P30025 P30024	N/A	LK9101 SHANK LK9102 SHANK
19	P29035	N/A	DIVERTER
20	P28045	N/A	RETAINING RING
21	P45001XX	N/A	SUPPLY HOSE
22	N/A	LK767*	SPRAY NEST ASSEMBLY
23	P45010	LK762*	SIDE SPRAY ASSEMBLY
24	P45007		
25	P45005*		
26	P45002		
27	P45009*		
28	P45006*		
29	P45008		
30	P45003*		