

ELKAY® stainless steel undermounts

ELUH4221R Harmony (Lustertone) ELUH4221L

Includes CBP1319 cutting board

Gauge: 18

Finish: Lustrous satin

Bowl Depth: large 9½"; small 6"

Drain Opening: 3½"

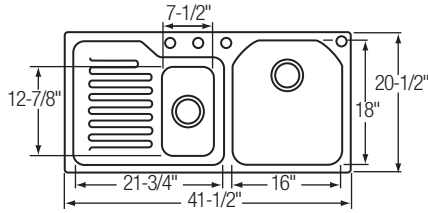
Undercoating: Sound Guard®

Minimum Cabinet Size: 45"

Recommended

Faucet: LK7322; Drain: LK99

Optional Accessories (■ Large bowl)



- | | | |
|------------------------------------|---|-------------------------------|
| Cutting Board
■ CB1713, CBS1613 | Rinsing Basket
■ LKWRB1618SS, LKWERBSS
Utensil Caddy: LKWUCSS | Bottom Grid
■ LKWOBG1618SS |
|------------------------------------|---|-------------------------------|

ELUH3621L Harmony (Lustertone) ELUH3621R

ELUH362110L

ELUH362110R

Gauge: 18

Finish: Lustrous satin

Bowl Depth:

ELUH3621: large 7½"; small 6"

ELUH362110: large 10"; small 6"

Drain Opening: 3½"

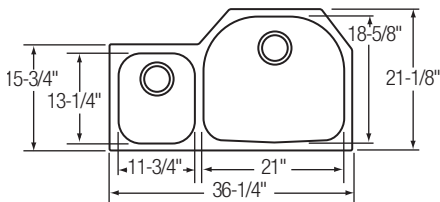
Undercoating: Sound Guard®

Minimum Cabinet Size: 42"

Recommended

Faucet: LK6520; Drain: LK99

Optional Accessories (■ Large bowl, ■ Small bowl)



- | | | | |
|---------------------------|--|---|----------------------|
| Cutting Board
■ CB2213 | Rinsing Basket
■ LKWRB2118SS, LKWERBSS
■ LKWRB1113SS
Utensil Caddy: LKWUCSS | Bottom Grid
■ LKWOBG2118SS
■ LKWOBG1113SS | Colander
■ LC1412 |
|---------------------------|--|---|----------------------|

ELUH3221L Harmony (Lustertone) ELUH3221R

ELUH322110L

ELUH322110R

Gauge: 18

Finish: Lustrous satin

Bowl Depth:

ELUH3221: large 7½"; small 5⅝"

ELUH322110: large 10"; small 5⅝"

Drain Opening: 3½"

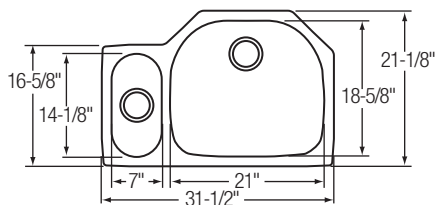
Undercoating: Sound Guard®

Minimum Cabinet Size: 36"

Recommended

Faucet: LK7620 (Shown LK7422CR); Drain: LK99

Optional Accessories (■ Large bowl, ■ Small bowl)



- | | | | |
|---------------------------|---|-------------------------------|----------------------|
| Cutting Board
■ CB2213 | Rinsing Basket
■ LKWRB2118SS, LKWERBSS
■ LKWRB715SS
Utensil Caddy: LKWUCSS | Bottom Grid
■ LKWOBG2118SS | Colander
■ SC1407 |
|---------------------------|---|-------------------------------|----------------------|

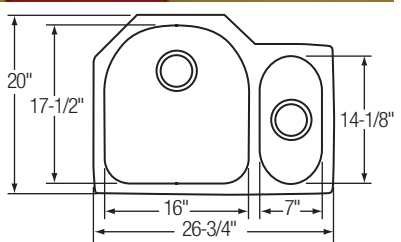


ELUH272010R Harmony (Lustertone)

Gauge: 18
 Finish: Lustrous satin
 Bowl Depth: large 10"; small 5⁹/₁₆"
 Drain Opening: 3¹/₂"
 Undercoating: Sound Guard®
 Minimum Cabinet Size: 30"

Recommended
 Faucet: (shown LK7322CR); Drain: LK99

Optional Accessories (■ Large bowl, ■ Small bowl)



- | | |
|--|--|
| <p>Cutting Board
 ■ CB1713</p> | <p>Rinsing Basket
 ■ LKWRB1617SS, LKWERBSS
 ■ LKWRB715SS
 Utensil Caddy: LKWUCSS</p> |
| <p>Bottom Grid
 ■ LKWOBG1617SS</p> | <p>Colander
 ■ SC1407</p> |

ELUH3119L Harmony (Lustertone)

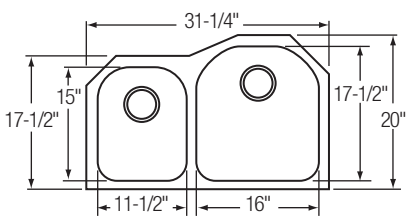
ELUH3119R

ELUH311910L
 ELUH311910R

Gauge: 18
 Finish: Lustrous satin
 Bowl Depth:
 ELUH3119: 7¹/₂"
 ELUH311910: large 10"; small 7¹/₂"
 Drain Opening: 3¹/₂"
 Undercoating: Sound Guard®
 Minimum Cabinet Size: 36"

Recommended
 Faucet: LK7422; Drain: LK99

Optional Accessories (■ Large bowl, ■ Small bowl)



- | | | |
|--|---|--|
| <p>Cutting Board
 ■ CB1713</p> | <p>Rinsing Basket
 ■ LKWRB1617SS, LKWERBSS
 ■ LKWRB1115SS
 Utensil Caddy: LKWUCSS</p> | <p>Bottom Grid
 ■ LKWOBG1617SS
 ■ LKWOBG1115SS</p> |
|--|---|--|

EGUH362110L Harmony

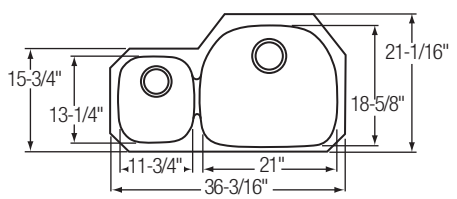
EGUH362110R

EGUH3621L
 EGUH3621R

Gauge: 18
 Finish: Soft satin
 Bowl Depth:
 EGUH3621: large 8"; small 5¹⁵/₁₆"
 EGUH362110: large 10"; small 5¹⁵/₁₆"
 Drain Opening: 3¹/₂"
 Undercoating: Sound Guard®
 Minimum Cabinet Size: 42"

Recommended
 Faucet: LK9102; Drain: LK99

Optional Accessories (■ Large bowl, ■ Small bowl)



- | | | | |
|--|---|--|---|
| <p>Cutting Board
 ■ CB2213</p> | <p>Rinsing Basket
 ■ LKWRB2118SS, LKWERBSS
 ■ LKWRB1113SS
 Utensil Caddy: LKWUCSS</p> | <p>Bottom Grid
 ■ LKWOBG2118SS
 ■ LKWOBG1113SS</p> | <p>Colander
 ■ LC1412</p> |
|--|---|--|---|

ELKAY® stainless steel undermounts

EGUH322110L Harmony

EGUH322110R

EGUH3221L

EGUH3221R

Gauge: 18

Finish: Soft satin

Bowl Depth:

EGUH3221: large 8"; small 6 $\frac{1}{16}$ "

EGUH322110: large 10"; small 6 $\frac{1}{16}$ "

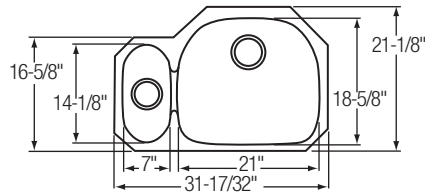
Drain Opening: 3 $\frac{1}{2}$ "

Undercoating: Sound Guard®

Minimum Cabinet Size: 36"

Recommended

Faucet: LK9102; Drain: LK99



Optional Accessories (■ Large bowl, ■ Small bowl)



■ CB2213



■ LKWRB2118SS, LKWERBSS
■ LKWRB715SS
Utensil Caddy: LKWUCSS



■ LKWOBG2118SS



■ SC1407

EGUH3119L Harmony (Elumina)

EGUH3119R

EGUH311910L

EGUH311910R

Gauge: 18

Finish: Soft satin

Bowl Depth:

EGUH3119: 8"

EGUH311910: large 10"; small 8"

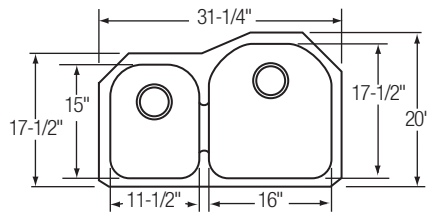
Drain Opening: 3 $\frac{1}{2}$ "

Undercoating: Sound Guard®

Minimum Cabinet Size: 36"

Recommended

Faucet: LK6176; Drain: LK99



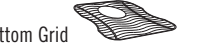
Optional Accessories (■ Large bowl, ■ Small bowl)



■ CB1713



■ LKWRB1617SS, LKWERBSS
■ LKWRB1115SS
Utensil Caddy: LKWUCSS



■ LKWOBG1617SS
■ LKWOBG1115SS

ELUH3520L Gourmet (Lustertone)

ELUH3520R

Gauge: 18

Finish: Lustrous satin

Bowl Depth: large: 9 $\frac{7}{8}$ "; small 7 $\frac{7}{8}$ "

Drain Opening: 3 $\frac{1}{2}$ "

Undercoating: Sound Guard®

Minimum Cabinet Size: 39"

Recommended

Faucet: LK7422 (shown LK7422CR); Drain: LK99

Optional Accessories (■ Large bowl, ■ Small bowl)



■ CBS1418



■ LKWRB2018SS, LKWERBSS
■ LKWRB1116SS
Utensil Caddy: LKWUCSS



■ LKWOBG2018SS
■ LKWOBG1116SS

